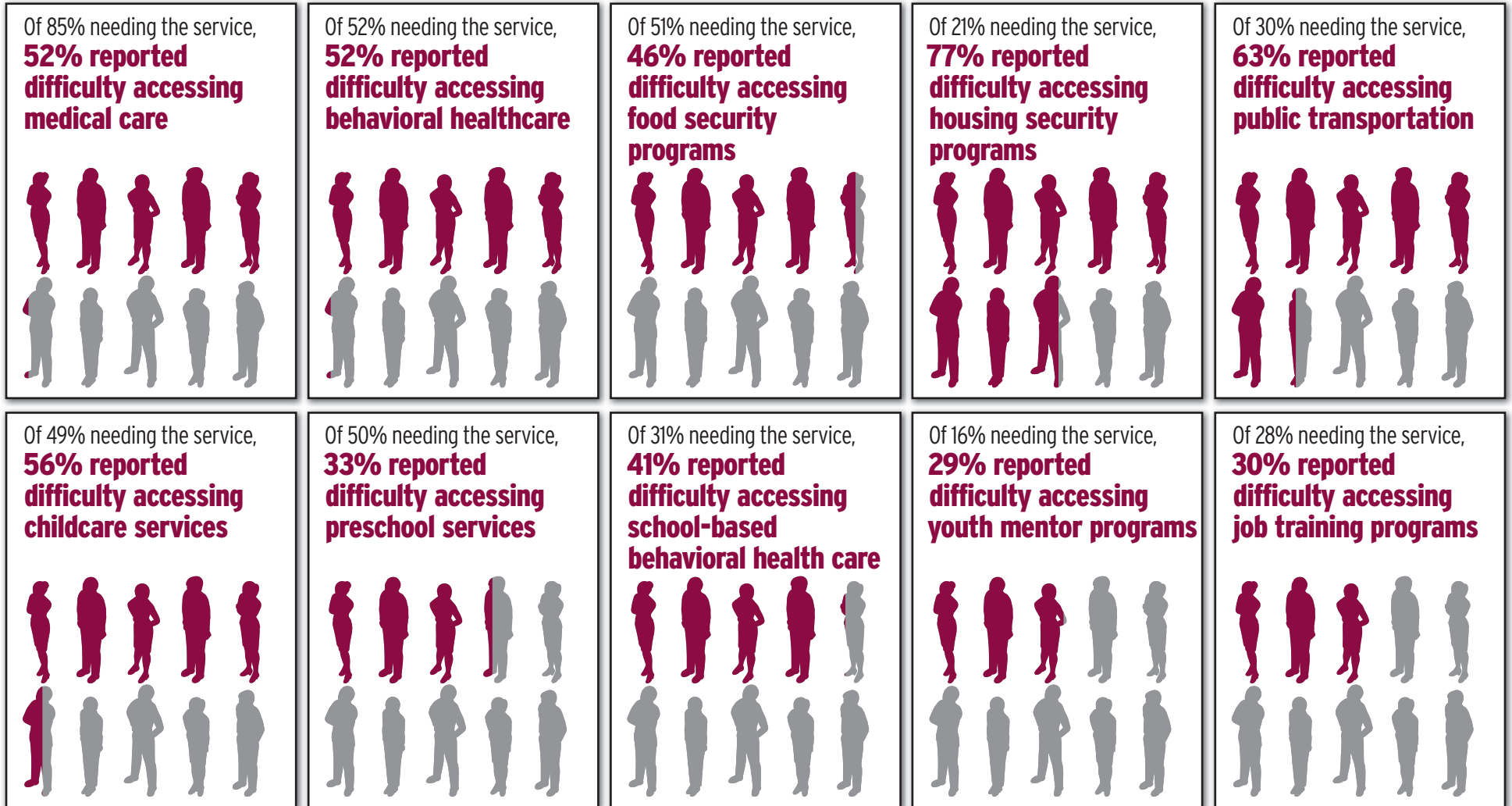


100% Taos County Survey Report: Identifying Barriers to Vital Services, 2024

This survey asked residents about their access to the ten vital services for surviving and thriving—including timely health care. This report serves to identify barriers to the services that keep residents healthy, safe, self-sufficient and empowered to thrive.



The 100% New Mexico Initiative's Vision and Mission

Our mission is to ensure that 100% of our county's children, students and families can access the ten vital services for surviving and thriving. To achieve this goal, we use the 100% Community model to identify service barriers and build local organization's capacity to address needs and promote health, safety, resilience and self-sufficiency.



www.100nm.org/taos



www.100nm.org





BE BOLD. Shape the Future.
College of Agricultural, Consumer and Environmental Sciences
Cooperative Extension Service
Extension Family and Consumer Sciences

The 100% Taos County Initiative's survey identifies the top barriers to accessing 10 vital services for surviving.


Difficulty accessing **medical care**

 It takes too long to get an appointment: **67%**

 (TIE) Costs too much • I can't find a provider accepting new patients: **38%**


 (TIE) I can't find a quality provider • I can't find a specialist near me: **36%**

 They don't accept my insurance: **29%**

 (TIE) I do not have insurance • I don't have enough insurance coverage • The co-pays are too high: **22%**

Difficulty accessing **behavioral healthcare**

 It takes too long to get an appointment: **53%**

 I can't find a provider accepting new patients: **50%**

 Costs too much: **42%**


 I can't find a quality provider: **38%**

 They don't accept my insurance: **31%**

Difficulty accessing **food security programs**

 I was told I don't qualify: **60%**

 I don't qualify: **40%**

 (TIE) I don't have reliable transportation • I feel bad about going: **22%**

 It is too far to travel: **21%**

 It takes too long to get an appointment • Wait list is too long: **19%**

Difficulty accessing **housing security programs**

 Wait list is too long: **68%**

 I don't qualify: **41%**

 It takes too long to get an appointment: **38%**


 I don't have reliable transportation: **32%**


 I was told I don't qualify: **30%**

Difficulty accessing **public transportation**

 It is too far to walk to the bus stop: **68%**

 It doesn't run during the times I need it: **59%**

 It doesn't go where I need to go: **50%**

 It doesn't come to where I live: **48%**

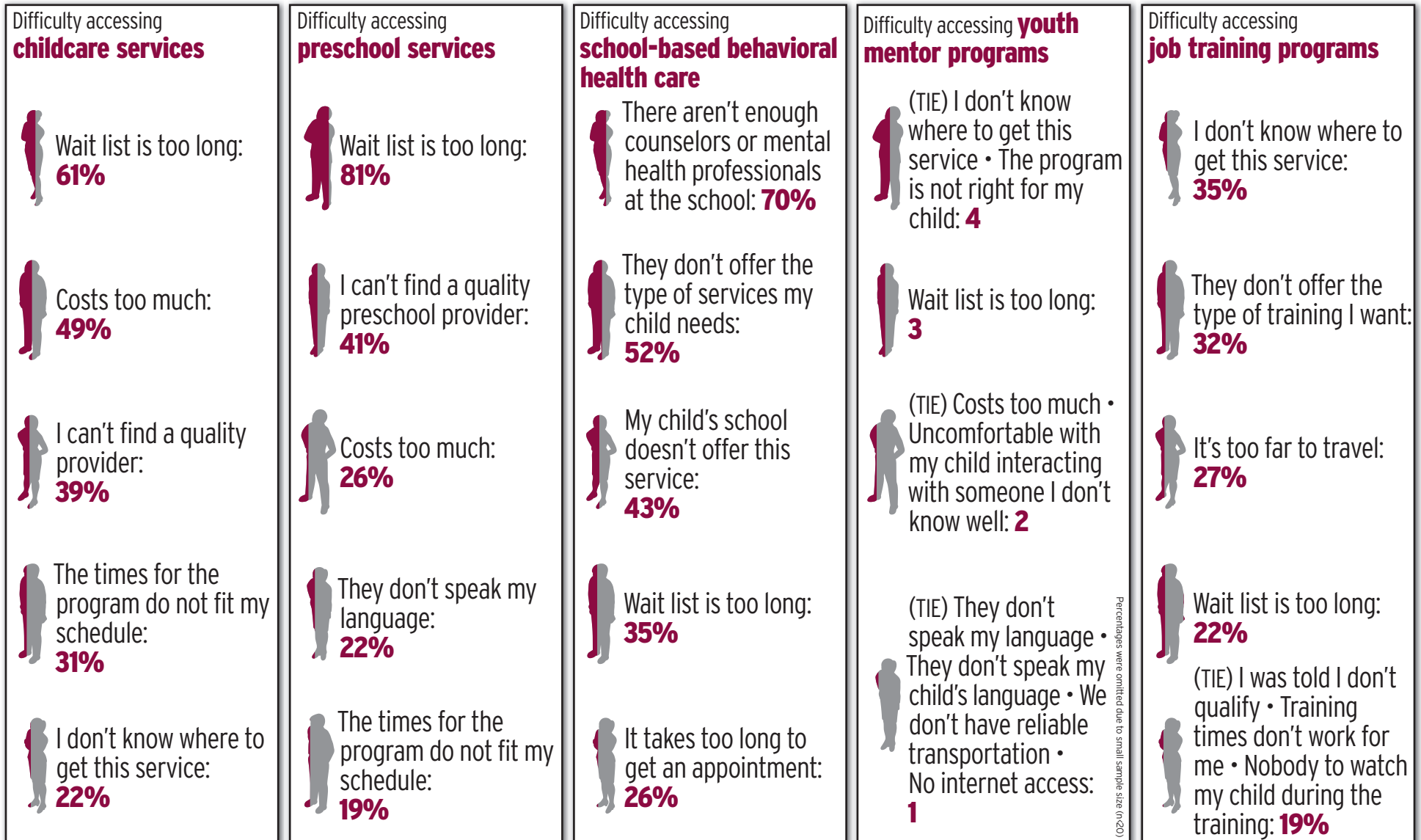
 It takes too long to use public transportation: **42%**

Services for survival can literally mean the difference between quality of life or trauma, illness, injury, and fatalities. Today, families face barriers to services.



BE BOLD. Shape the Future.
College of Agricultural, Consumer and Environmental Sciences
Cooperative Extension Service
Extension Family and Consumer Sciences

The 100% Taos County Initiative's survey identifies the top barriers to accessing 10 vital services for thriving.



The services for thriving strengthen the health, safety, education, and quality of life of children, students and families. Today, those services may be out of reach.



BE BOLD. Shape the Future.
College of Agricultural, Consumer and Environmental Sciences
 Cooperative Extension Service
 Extension Family and Consumer Sciences

How the 100% Taos County Initiative Survey was conducted.

The 100% Taos Team launched the survey between May 2023 and December 2023. The surveys were available in Spanish and English, online and on paper. The county organizers promoted the survey through personal contacts, community events, and locations providing services, such as medical and behavioral health centers and food distribution sites. The survey was also distributed through schools, city, and county outreach methods. An initial sample of 603 survey responses was collected. After eliminating responses from those who did not consent, did not answer any service-related questions, or reported living in another county, the final sample consists of (N=546) valid respondents (356 online and 190 on paper). The survey aims to understand the level of need and access to basic surviving and thriving services. We hope the results serve as a jumping-off point, providing insight into areas that may merit further exploration.

Respondents' Neighborhood of Residence

Neighborhood	N	Percent	Neighborhood	N	Percent
Ranchos de Taos	93	17.3%	Vadito	6	1.1%
Taos City Limits	83	15.4%	Amalia	5	0.9%
Taos (Outside of the City Limits)	56	10.4%	Questa (Outside of the City Limits)	5	0.9%
Talpa	24	4.5%	Picuris Pueblo	5	0.9%
Penasco	23	4.3%	Des Montes	5	0.9%
Arroyo Seco	22	4.1%	Rio Lucio	5	0.9%
El Prado	22	4.1%	Canon	4	0.7%
Questa Village Limits	22	4.1%	San Cristobal	4	0.7%
Arroyo Hondo	20	3.7%	Pilar	3	0.6%
Taos Pueblo	19	3.5%	Cordillera	3	0.6%
Other, please specify:	14	2.6%	Llano Largo	3	0.6%
Las Colonias	15	2.8%	Trampas	3	0.6%
Chamisal	13	2.4%	La Llama	2	0.4%
Los Cordovas	11	2.0%	Red River Village Limits	2	0.4%
Llano De San Juan	10	1.9%	Taos Ski Valley Village Limits	2	0.4%
Rodarte	9	1.7%	El Valle	1	0.2%
Ranchitos	8	1.5%	Cerro	1	0.2%
Valdez	8	1.5%	Tres Piedras	1	0.2%
Carson	6	1.1%			

100% of Taos County's residents can thrive.

The groundbreaking 100% Taos County initiative is working to ensure that all families in the county have access to the 10 vital services for surviving and thriving:

- Medical/Dental Care
- Behavioral Healthcare
- Food Security Programs
- Housing Security Programs
- Transportation
- Parent Supports
- Early Childhood Learning Programs
- Community Schools with family services
- Youth Mentor Programs
- Job Training

100% Taos is showing our commitment to 100% of our families by building 10 action teams around the 10 vital services that determine the quality of life for residents. We are making a system-wide change, creating a seamless system of family services where 10 service sectors are working in alignment with local networks of organizations. We are transforming the adverse social determinants of health into the positive determinants by ensuring vital services.

For more information about the 100% Taos initiative and the survey results, visit www.100nm.org/taos

